

1D



Piston Ring Removal and Installation

Refer to [Piston Removal and Installation](#).

NOTE:

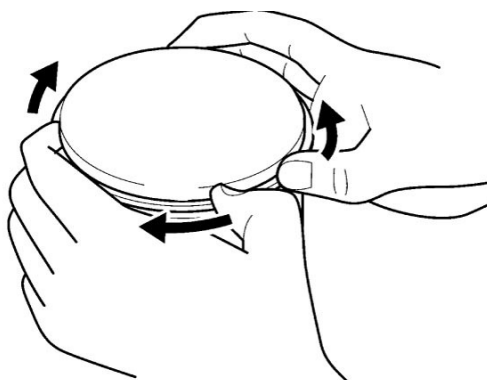
The front and rear piston rings are installed symmetrically and therefore the removal procedure for one side is the same as that for the other side.

Removal

- 1) Carefully spread the ring opening with your thumbs and then push up the opposite side of the 1st ring to remove it.

NOTE:

Do not expand the piston ring excessively since it is apt to be broken down.



- 2) Remove the 2nd ring and oil ring in the same procedure.

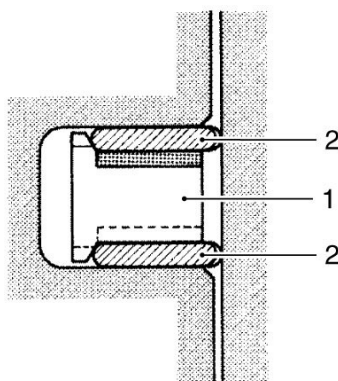
Installation

[Reference: Piston and Piston Ring Inspection](#)

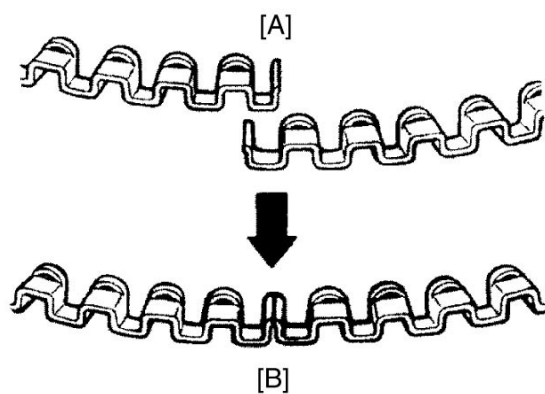
NOTE:

- When installing the piston ring, be careful not to damage the piston.
- Do not expand the piston ring excessively since it is apt to be broken down.

- 1) Install the piston rings in the order of the oil ring, 2nd ring and 1st ring.
 - a) The first member to go into the of the oil ring groove is a spacer (1).
After placing the spacer, fit the two side rails (2).

**NOTICE:**

When installing the spacer, be careful not to allow its two ends to overlap in the groove.

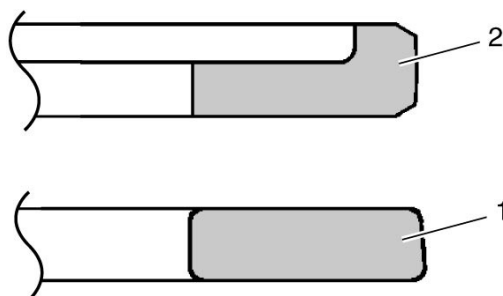


[A]:	Incorrect	[B]:	Correct
------	-----------	------	---------

b) Install the 2nd ring (1) and 1st ring (2) to piston.

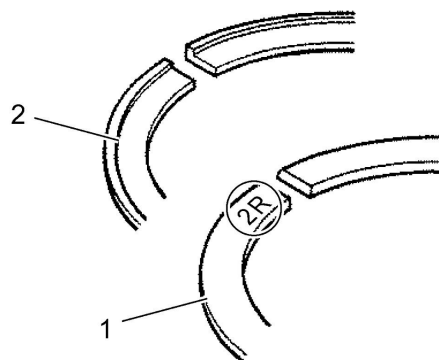
NOTE:

1st ring (2) and 2nd ring (1) differ in shape.

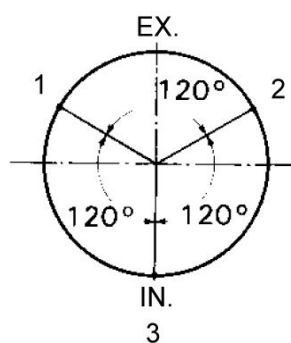


NOTE:

- 2nd ring (1) has letters [2R] marked on the side. Be sure to bring the marked side to the top when fitting it to the piston.
- Bring the concave side of 1st ring (2) to the top when fitting it to the piston.



- 2)** Position the gaps of the three rings and side rails as shown. Before inserting piston into the cylinder, check that the gaps are so located.



1.	2nd ring and lower side rail
2.	Upper side rail
3.	1st ring and spacer